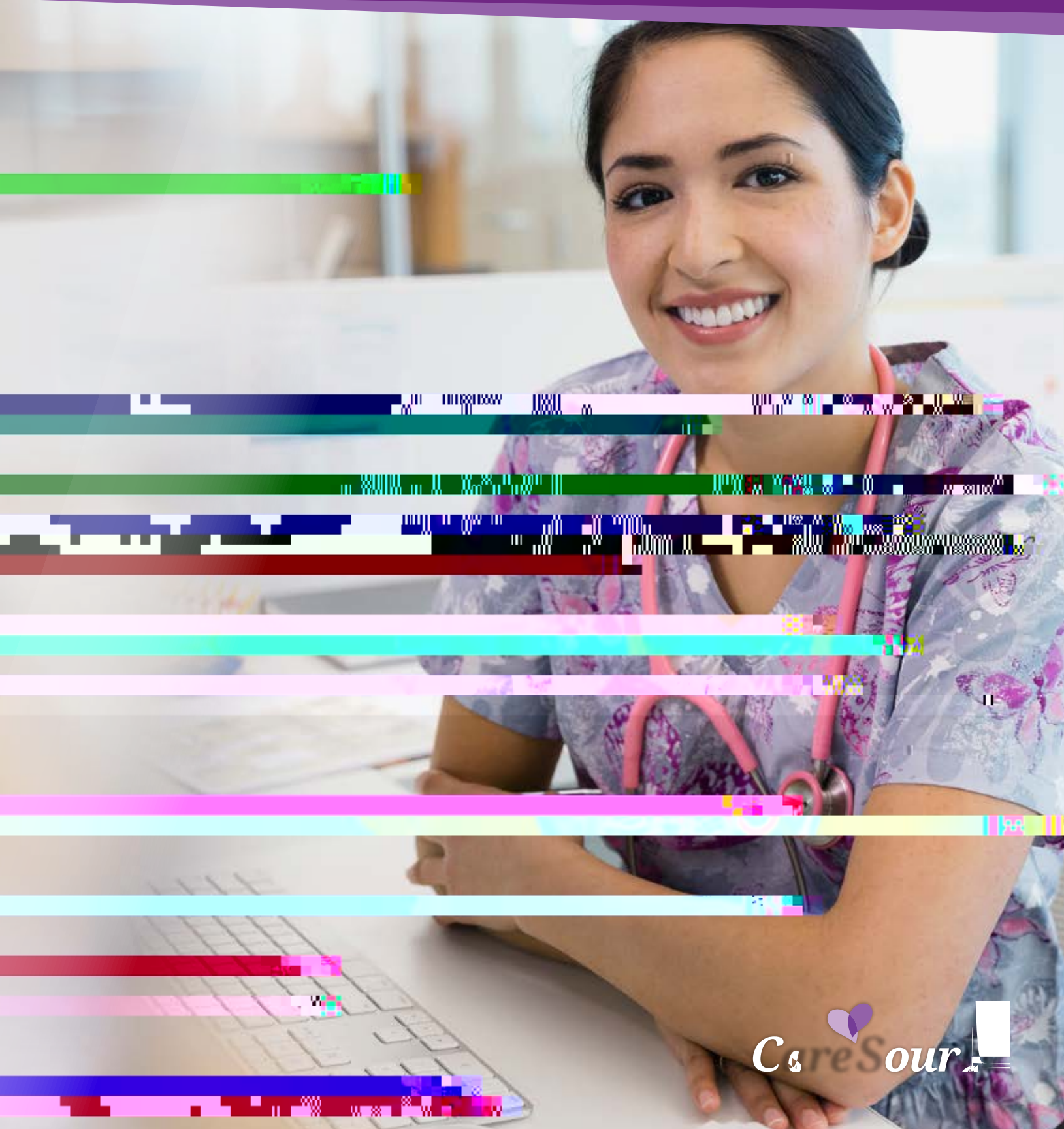




FALL 2019

PROVIDER *Source*

A Newsletter for CareSource® Health Partners



W
D
CO
Th.
you

W
D
CO
Th.
you

W
D
CO
Th.
you

W

W

W



Antipsychotic Prescribing for the

Current literature suggests that in recent years the prescribing of antipsychotic medications to children was rising. To address concerns related to over-prescribing, National Committee for Quality Assurance (NCQA) utilizes two quality measures (monitoring of children prescribed more than one antipsychotic medication and ,U V W O L Q H S V \ F K R V R F L D O W U H D V prescribed antipsychotic medication) to help-4 (s)1.4(u)5.3



For more information, visit [CareSource](#)

Streamlining your Prior Authorization Submissions with our

CareSource's Provider Portal is the preferred method for providers to complete their prior authorization submissions.

Using our portal, providers can streamline many of their tasks including:

- Checking eligibility
- Uploading supporting documentation for a PA request
- Receiving an immediate approval, pending decision or check a pending request

We are always working to improve our portal to meet your needs and have recently added some new enhancements including:

- Submitting information for a concurrent review
- Requesting a change or update to an existing PA, such as:
 - Attaching additional documentation after initial request
 - Changing Admit Date or Date of Service
 - Updating or providing discharge date
 - Adding or changing diagnosis and/or procedure codes
 - Updating number of requested units
 - Updating provider information

We offer training for general portal use twice a month or individual training can be scheduled by request. Contact us by email at CiteAutoAssistance@CareSource.com for more information about registering for the portal, to sign up for one of our training sessions or if you have any questions.





New Provider Document Available on Provider Portal

CareSource has created a new Controlled Substance Report (CSR) for our providers as a tool to provide awareness of prescribing patterns for controlled substances.

The CSR shows a consolidated view of all members for whom the provider has written a controlled substance prescription. The report is available 24/7 on the Provider Portal and contains a glossary that is shaded. We will continue to enhance the CSR with additional metrics.

How to Access the CSR:

Providers can access the report through the Provider Portal on [caresource.com](#):

- First, look for the “Are you a provider?” section on the left hand menu bar.

1. Select your state from the dropdown menu.

- After choosing the state from which you practice, enter your username and password.

- Once logged in, go to the left navigation, under the Provider options, and select “Provider Documents”.

- Select available reports.

If there are questions about the Controlled Substance Report, providers can send requests to the following secure email: Controlled_Substance_Report@caresource.com. CareSource places the utmost importance on providers delivering quality member care. We encourage your use of the CSR as an enhanced tool to help you monitor your prescribing patterns.



For more information, visit [CareSource](#).



