



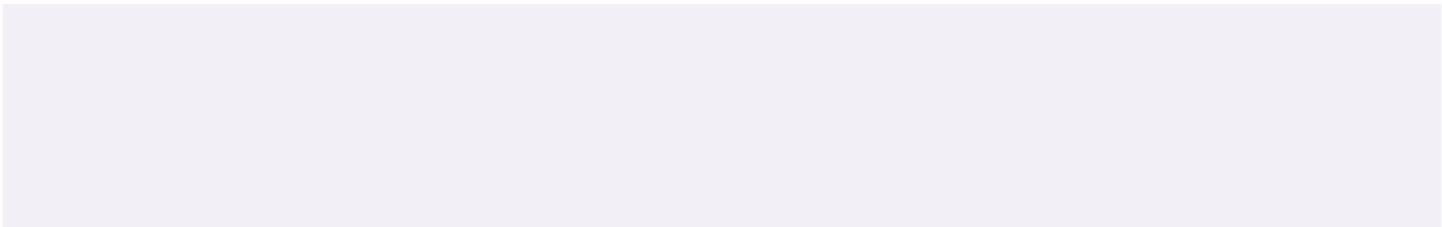
MEASURE	DESCRIPTION OF MEASURE	DOCUMENTATION TIPS	COMPLIANCE CODES & MEASURE TIPS
---------	------------------------	--------------------	---------------------------------

Access/Availability of Care

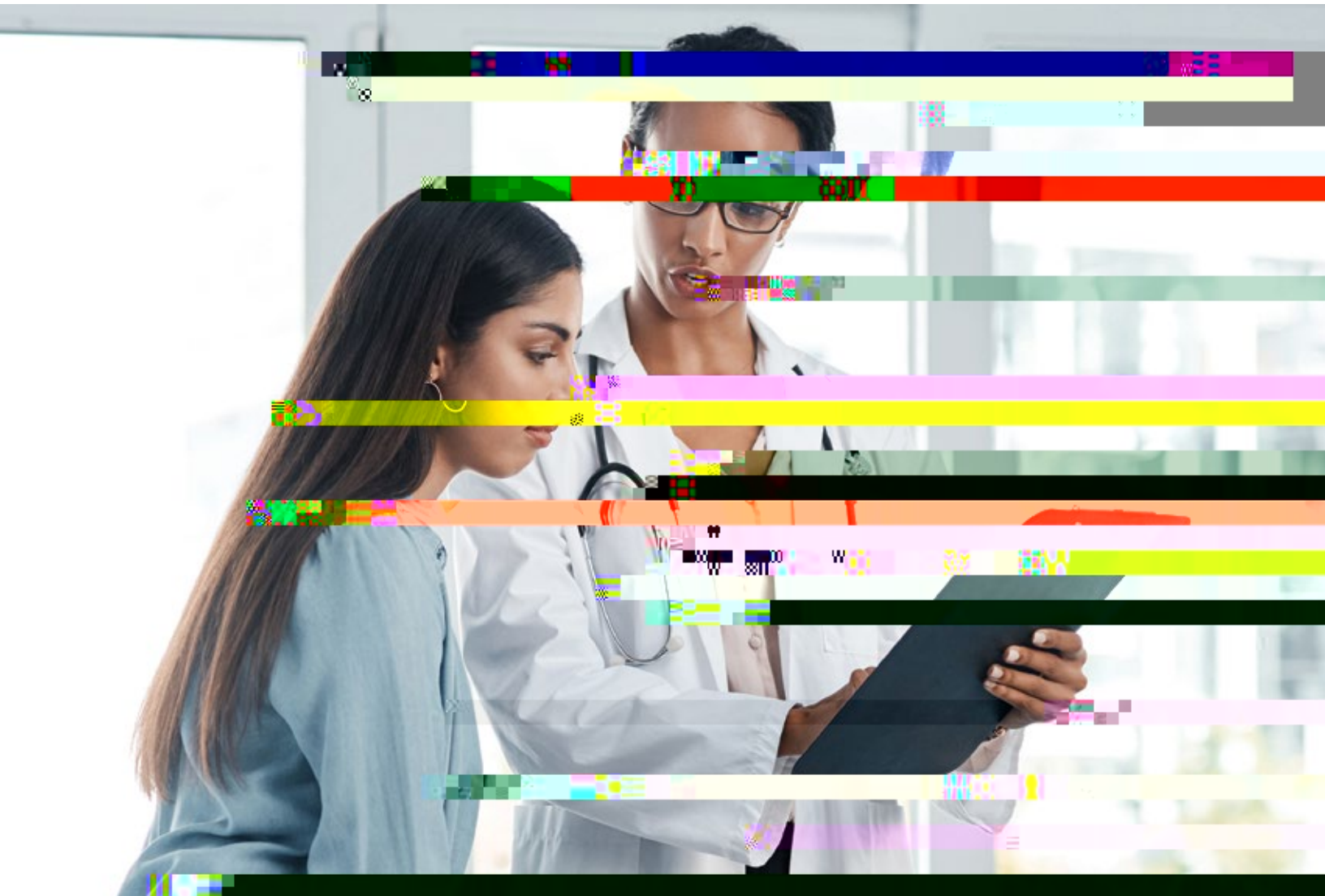
--	--	--	--

--	--	--	--

MEASURE	DESCRIPTION OF MEASURE	DOCUMENTATION TIPS	COMPLIANCE CODES & MEASURE TIPS
---------	------------------------	--------------------	---------------------------------



MEASURE	DESCRIPTION OF MEASURE	DOCUMENTATION TIPS	COMPLIANCE CODES & MEASURE TIPS
Respiratory Conditions			



MEASURE	DESCRIPTION OF MEASURE	DOCUMENTATION TIPS	COMPLIANCE CODES & MEASURE TIPS
Cardiovascular Conditions			
			- OR -
			- OR -
			<i>Note: CPT II codes are for quality reporting purposes only, not for payment.</i>

Diabetes Care			

MEASURE	DESCRIPTION OF MEASURE	DOCUMENTATION TIPS	COMPLIANCE CODES & MEASURE TIPS
Diabetes Care			

Note: CPT II codes are for quality reporting purposes only, not for payment.

Note: CPT II codes are for quality reporting purposes only, not for payment.

Note: CPT II codes are for quality reporting purposes only, not for payment.

- OR -

MEASURE	DESCRIPTION OF MEASURE	DOCUMENTATION TIPS	COMPLIANCE CODES & MEASURE TIPS
Overuse/Appropriateness			

